

THE FINISH THAT'S RIGHT FOR YOU

Hickory White offers many finish options that make it easy to customize your furniture and your home. Create a unique look by mixing finish combinations. The opportunities are limited only by your imagination. Hickory White offers three levels of finishes varying in application time and difficulty. The complexity of the finish is reflected in the terms Standard, Premium, and Artisan.

Standard Finishes



43: ANTIQUE RED
A rich deep red finish that has been hand burnished to add aging and lightly spattered to add a true antique value.



F4: BULLION
A gold paint with a glazed appearance to emulate the beauty and appearance of gold leafing.



C8: CAFE NOIR
The color of rich, dark Columbian coffee, Cafe Noir is a beautifully sleek very dark brown/black finish with a high sheen and no applied distressing.



46: CAMBRIDGE
A unique combination of a light aged pecan finish that has been hand-burnished. This is the base finish for the striped #76 Oxford.



70: CARMEL
A warm and inviting carmel colored wood tone enhanced with hand burnishing and spatter creating an ideal finish for rich casual lifestyles.



C7: CASHMERE
Like a treasured cashmere scarf, the warmth and elegance of this high-sheen dark walnut finish adds a touch of class and refinement to any item.



B3: CHAMOIS SANDBLASTED
Sandblasted for a natural weathered look. Chamois has white hang-up and distressing to highlight the rough-hewn texture. Only available on solid Ash or Oak.



42: COGNAC
Rich medium brown earth tones accentuate this bold and elegant finish with the depth and satiny sheen of fine cognac.



44: EBONY
A rich rubbed-through black finish that highlights the underlying wood tones with a lustrous satin-like patina.



48: ESPRESSO
A deep rich black traditional finish with a deep luster and a medium sheen level that has a very light rub-through along the perimeter edge.



77: ESTATE
An aged antique chestnut finish with wonderful russet undertones. This is the base finish for the striped Continental finish.



E5: FRENCH BLUE
Aged like a fine vintage Court piece, this is a beautiful grey-blue paint with hints of silver, dry-brushing and glazing.



56: G2
A beautiful, clear, russet finish with a medium sheen, light burnishing and slight spatter affording a more casual easy to live with presentation.



C2: HARVEST
Ripe wheat stalks create an inviting dark golden hue which inspired our Harvest finish, especially developed to enhance the natural beauty of items crafted in pine and other naturally light-colored wood species.



C6: KHAKI
Reminiscent of a classic pair of khaki pants, our Khaki finish has a painted look created with toners to subtly allow the wood grain beneath to telegraph through.



13: LANCASTER
Medium brown satin finish with hand applied burnishing and light visual distressing reminiscent of a well cared for 19th century antique.



40: LOW COUNTRY
A beautiful, relaxed, heavily aged deep walnut hand-burnished brown finish with light spatter adding antique low country charm.



20: MAISON
A rich hand-rubbed waxed dark walnut finish enhanced with hand burnished edges, cowtailing, and a light antique spatter.



C3: MALABAR
A wonderfully soft black finish with brown undertones.



A2: MODERN ELM
Developed to take advantage of the striking grain pattern of elm veneers, this warm greyish-brown finish creates a soft, transitional appearance.



A1: MODERN WALNUT
A rich, warm, high sheen brown finish that emphasizes the clarity and natural beauty of the wood beneath.



07: NEWPORT
An elegant clear medium brown finish with very light aging and the subtle burnishing of a well cared for antique.



53: SABLE
A rich dark brown finish with excellent clarity. A handsome Bronze accent stripe is added to the Stratos (530) collection to complement and enhance its richness



E4: SMOKE
Warm, medium grey finish with brown undertones and light dry-brush aging around the edges which allows the rich grain pattern of the wood beneath to show through.



54: SOHO
A rich medium value clear brown finish reminiscent of a lightly burnished antique pecan with a medium sheen level.



E3: SONOMA
Evoking the casual modern lifestyle of the wine country, this rich deep brown finish features cowtailing and dry-brushed highlights.



27: SUGAR
An opaque, clean white finish with a very slight intermittent rub-through along the perimeter edge.



F1: TOSCANA
A rich medium brown finish with a high sheen finish, craftsman applied cowtailing, hand-burnishing and slight splatter offering a more casual easy to live with application.



82: VERONA
An elegant, dark rich coffee color that radiates the subtle undertones of its deep cordovan base with light spatter application.



06: VINEYARD
A deep aged brown hand-burnished wood finish, hand-rubbed to provide the deep luster of a well aged antique.



C1: VINTAGE BROWN
A warm, deep chestnut brown finish with craftsmanlike hand applied dry-brushing and shading to create the look of much loved but well worn vintage piece.



65: WALNUT
A sophisticated satin finished walnut brown with russet undertones enhancing the natural beauty of wood.



66: WALNUT IVORY
A clean fresh linen lacquer paint finish with a very light spatter that provides a transitional opportunity for any wood species.



C9: WINTER WHITE
Winter White is our opaque, clean white Sugar finish with an over-glaze to create strategically placed dry-brushing and shading to create the look of much loved but well worn vintage piece.

Premium Finishes



39: BLACK NICKEL
A deep nickel-colored paint finish with very fine black brushing on top to resemble black nickel metal.



CM: COLOR MATCH
Add your favorite paint color to our furniture with Color Match. With the Color Match program, choose a paint color, send us a paint finish chip, and we will match it to finish your custom order. With thousands of colors to choose from, it has never been easier to incorporate your unique style.



73: CONTINENTAL
An antique, deep chestnut finish with russet undertones accented with aged black and gold accent striping and a light dusty wax.



21: DOVE
A soft patinated Belgian grey finish, hand burnished and detailed with a gently spattered antique glaze.



E1: FRENCH BLUE WITH GOLD
Our French Blue finish accented with Antique Gold striping.



76: OXFORD
A unique combination of a light aged pecan finish that has been hand-burnished, highlighted with aged gold and charbrown accent striping where applicable.



03: PLATINUM
A metallic finish with an underlying base of silver and very subtle hand-padded gold overtones giving a platinum patina.



E2: SANTE FE
A two-tone finish that combines a warm, earthy chestnut brown with black accents to create a classic casual look.



16: SILKWOOD
A very artistic tawny beige finish in a color reminiscent of raw silk that has been very lightly spattered with moderate read through to the wood grain.



79: STONE
Very clean grey-beige finish that reads through to the beauty of the wood grain beneath providing a handsome casual transitional feel.



F2: TALC
A creamy white textured finish featuring the use of gesso to create the one-of-a-kind old world look. Each application will vary in texture and appearance due to the incredible handwork.



34: WASHED LINEN
A very pleasing clean, off-white finish with a very light rub through providing the natural look of washed cotton or flax.

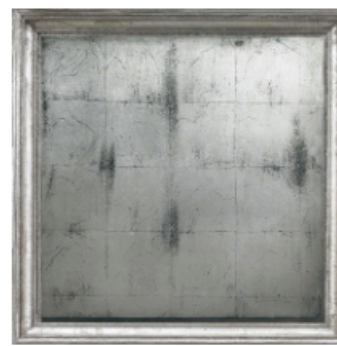
Artisan Finishes



D7: AZURE
Evoking the intense blue skies of the Cote d'Azur with creamy white & subtle golden accents and the hardware painted over as on a treasured antique. Available on 865-31 only.



C5: BASALT
Inspired by the color and texture of the dark grey, rough texture of basalt stone.



ML: BLACK PEARL (METAL LEAF)
A creamy white textured finish featuring the use of gesso to create the one-of-a-kind old world look. Each application will vary in texture and appearance due to the incredible handwork.



A3: BLANC
A true artisan finish, created with multiple layers of ivory and slight sepia tones with wear-through and over glazes to create a special old-world look.



C4: COBBLESTONE *
Interpreted from a Parisian antique, the sun-kissed amber-white tones and crusty texture of this finish resemble the well-worn cobblestone streets of a Provencal village.



GL: GOLD LEAF
A true hand-leafed finish; sheets of gold leaf are hand-applied over a frame, cured, then glazed over to soften the overall effect and create a beautiful patina.



71: OLD WORLD
A very labor intensive aged, antique white artisan painted finish designed to capture the look and feel of pieces well cared for over generations.



PL: PLATINUM LEAF
A true leafing process, silver leaf sheets are hand applied to the wood frame, cured and glazed over to create a beautiful Platinum leaf finish.



SG: SILVER LEAF WITH GOLD

Leaf finish created by applying gold painted ground color, hand-applying silver leaf sheets in a grid pattern on top of the paint, then wearing the edges to expose the gold.



SS: SILVER LEAF SQUARES

A beautiful silver leaf finish painstakingly applied by hand in a grid pattern with very subtle black highlighting to create a slightly vintage appearance.

* Available only on 773-60, 775-31, and 775-71.

Striping Options



Many items lend themselves to hand-stripping applications which can enhance the design and customize the piece to one's individual taste.

Surfaces



Taupe Shagreen**



Ivory Shagreen**



Charcoal Shagreen**

** Shagreen Surfaces are only available on select items as indicated in the price list.