

# Make It Yours® Bedroom

Choose your bedroom case piece and add a base style. Select an overlay design for drawers and doors and choose a hardware option and placement. Add a personalized finish and an optional custom embellishment to create a look that is completely your own. Personalize your bedroom — *make it yours.*



## 1 CHOOSE your CASE.



**WILLIAMS TALL DRESSER (CC01)**  
W 73 D 22 H 30.25 (+base)  
Not available with F11 Drawer Face



**MCGUIRE DRESSER (CC02)**  
W 73 D 22 H 24.75 (+base)



**MCKINNEY SIDE TABLE (CC03)**  
W 37.25 D 19 H 24.75 (+base)



**BARNES SIDE TABLE (CC04)**  
W 37.25 D 19 H 24.75 (+base)



**MANNING SIDE TABLE (CC05)**  
W 37.25 D 19 H 24.75 (+base)



**PROSSER DRAWER CHEST (CC06)**  
W 48 D 22 H 28.25 (+base)



**GOTTFRIED SIDE TABLE (CC07)**  
W 37.25 D 19 H 24.75 (+base)



**JONES SIDE TABLE (CC08)**  
W 30 D 19 H 23 (+base)  
(tray pull will match hardware finish)



**CREMINS SIDE TABLE (CC09)**  
W 30 D 19 H 23 (+base)



**HOLLAND SIDE TABLE (CC10)**  
W 30 D 19 H 23 (+base)  
(tray pull will match hardware finish)



**TRACY SIDE TABLE (CC11)**  
W 24 D 19 H 24.5 (+base)



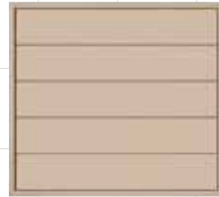
**CLAWSON SIDE TABLE (CC12)**  
W 24 D 19 H 28  
NO BASE OPTIONS



**MILBURN DRESSER (CC13)**  
W 73 D 22 H 37.50 (+base)  
Not available with F11 Drawer Face



**VANCE DRESSER (CC14)**  
W 58.5 D 22 H 29.75 (+base)



**WILEY TALL CHEST (CC15)**  
W 48 D 22 H 45.50 (+base)



**BRITTON SMALL DRAWER CHEST (CC17)**  
W 23.25 D 19 H 23 (+base)



**MERCER TALL CHEST (CC18)**  
W 37.25 D 19 H 47.75 (+base)  
Not available with F11 Drawer Face

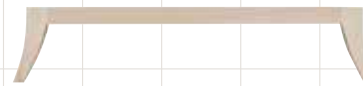
## 2 CHOOSE your BASE.



**TAPERED LEG (A)**  
Base Height: 7"  
(CC11 Base Height: 4")



**BRACKET LEG (B)**  
Base Height: 5.75"  
(CC11 Base Height: 4")



**SABER LEG (C)**  
Base Height: 7" (CC11 Base Height: 4")  
Note: This base option increases overall width by 4".



**PLINTH BASE (D)**  
Base Height: 4"  
(CC11 Base Height: 3")



**TURNED LEG (E)**  
Base Height: 7"  
(CC11 Base Height: 4")



**TURNED LEG WITH FERRULE (F)**  
Base Height: 7" (CC11 Base Height: 4")  
Ferrule Finish Available in Antique Bronze, Brushed Nickel or Satin Brass



**METAL TUBE LEG (G)**  
Base Height: 5.75" (CC11 & CC17 Base Height: 4")  
Metal Tube Finish Available in Antique Bronze, Brushed Nickel or Satin Brass



**STRETCHER BASE (H)**  
Base Height: 10"  
(CC11 & CC17 Base Height: 5")

## 3 CHOOSE your STANDARD OR PREMIUM FACE (drawer or door). Overlay designs are applied to the face of each drawer and door front.\*

### STANDARD DOOR/DRAWER FACE



**OUTSIDE BEAD (F01)**



**INSIDE & OUTSIDE BEAD (F02)**

Not recommended with H13 Hardware. Not recommended with H06 Hardware on CC01, CC02, CC03, CC04 or CC07 Cases. Not recommended with H10, H11, H12, H13, H14, H15, H18, H21 or H29 Hardware on CC08, CC09 or CC10 Cases. Not recommended with H04, H06, H07, H09, H10, H11, H12, H13, H14, H15, H16, H17, H18, H20, H21, H22, H25, H26, H27, H28, H29, H32 Hardware on CC11, CC12 and CC17 Cases.



**CLIP CORNER (F03)**

Not recommended with H07, H09, H13, H20, H29, H32 Hardware on CC11, CC12 and CC17 Cases.



**THIN CLASSIC (F04)**

Recommended with H01, H02, H03, H08, H19, H22, H23, H24, H26, H27, H28, H30, H31, Hardware only. Not recommended with H07, H09, H11, H13, H20, H29, H32 Hardware on CC11, CC12 and CC17 Cases.



**BAMBOO (F05)** Not available with combination finishes or highlight striping

Not available with combination finishes or highlight striping. Not recommended with H07, H09, H11, H13, H20, H29, H32 Hardware on CC11, CC12 and CC17 Cases.



**S CURVE PANEL (F06)**

Not recommended with H13 Hardware. Not recommended with H10, H11, H12, H13, H15, H18, H21 or H29 Hardware on CC08, CC09 or CC10 Cases. Not recommended with H04, H07, H09, H10, H11, H12, H13, H14, H15, H16, H18, H20, H21, H25, H29, H32 Hardware on CC11, CC12 and CC17 Cases.



**RIBBON (F07)**

Not recommended with H07, H20, H32 Hardware on CC11, CC12 and CC17 Cases.



**GREEK KEY (F08)**

Not recommended with H07, H10, H13, H20, H29, H32 Hardware on CC11, CC12 and CC17 Cases.



**CORDUROY (F09)**



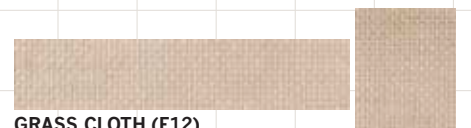
**STEP PANEL (F10)**

Not recommended with H11, H12, H13, H21 or H29 Hardware on CC08, CC09 or CC10 Cases. Not recommended with H07, H09, H11, H13, H20, H29, H32 Hardware on CC11, CC12 and CC17 Cases.



**MOD (F11)** Paint & Leaf Finishes Only (design not available on CC01, CC13, CC18)

Recommended with H01, H02, H03, H04, H05, H06, H07, H08, H19, H20, H22, H23, H24, H26, H27, H28, H30, H31 and H32 Hardware only. Not recommended with H09, H20, H25, H29, H32 Hardware on CC11, CC12 and CC17 Cases. Not Recommended with H09, H20, H25, H29, H32 Hardware on CC11, CC12 and CC17 Cases.



**GRASS CLOTH (F12)**

Not Recommended with H20 and H32 Hardware on CC11, CC12 and CC17 Cases.

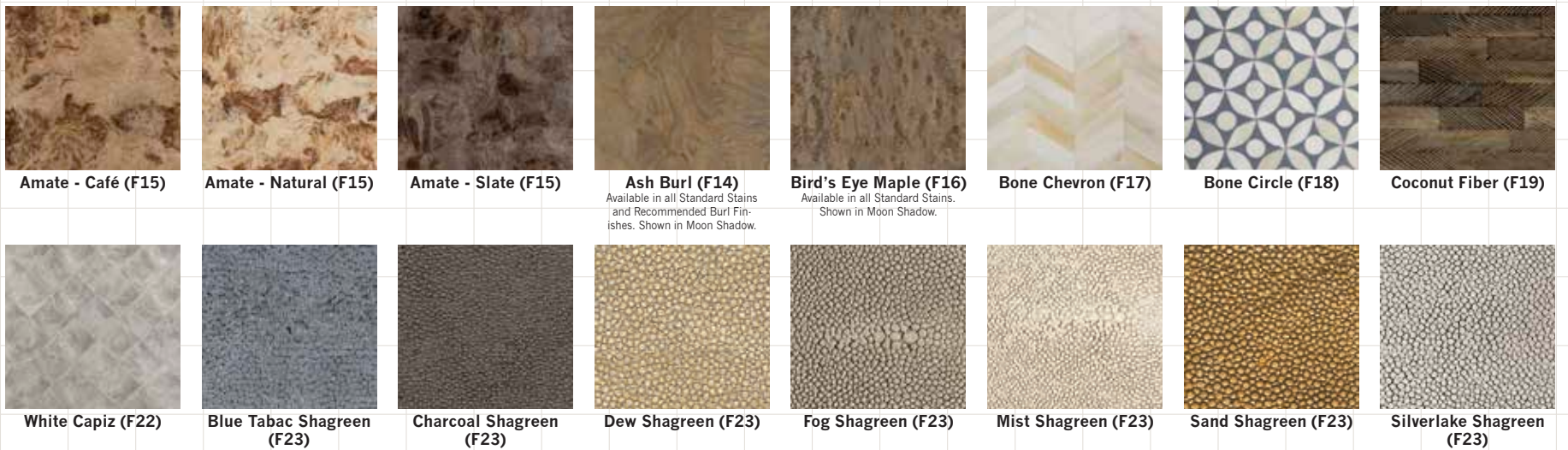


**CLEAN (F13)**

Not Recommended with H20 and H32 Hardware on CC11, CC12 and CC17 Cases.

MAKE IT YOURS BEDROOM

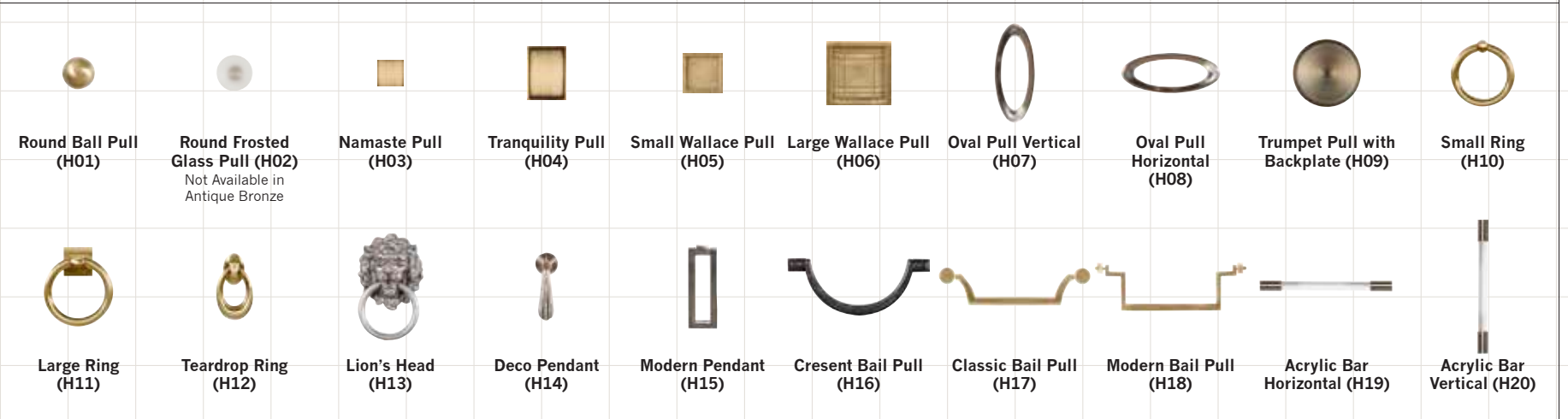
PREMIUM DOOR/DRAWER FACE (additional charge)



\*Refer to the Vanguard website for restrictions on select face/hardware combinations.

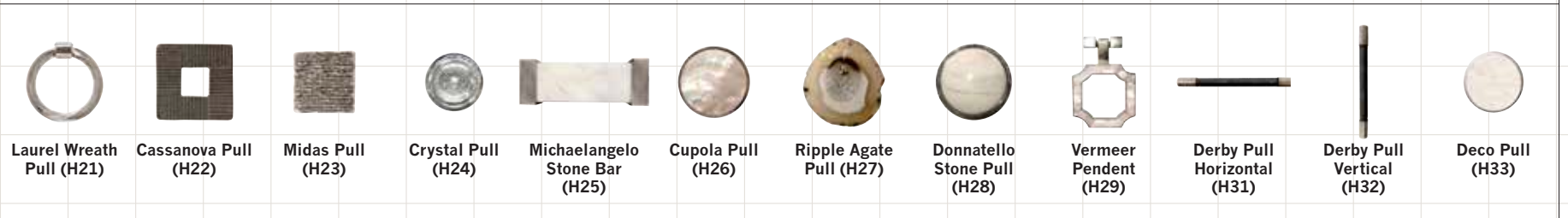
4 CHOOSE your STANDARD OR OPTIONAL PREMIUM HARDWARE.\*

STANDARD HARDWARE. All STANDARD hardware, unless noted, available in Antique Bronze, Brushed Nickel or Satin Brass.



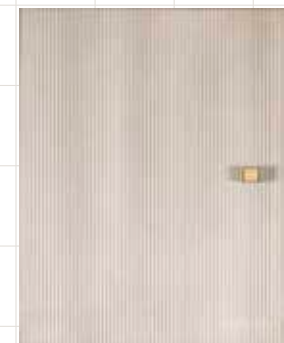
OPTIONAL PREMIUM HARDWARE (additional charge)

Only H21, H22 and H23 PREMIUM hardware options are available in Antique Bronze, Brushed Nickel or Satin Brass. Refer to individual hardware for material and finish.



\*Refer to the Vanguard website for restrictions on select face/hardware combinations.

5 CHOOSE your PLACE. Select the placement/position of hardware on drawers and doors.



6 CHOOSE your PERSONALIZED\* FINISH.

Select from hundreds of finishes — standard stain, paint or metallic paint finish, MIY paint, artisan wood finish or premium leaf finish. You can even make it a combination finish with contrasting drawers, doors, tops, end panels or face styles (certain face styles can only take a paint finish). Make a bold statement with high contrast choices, or go for an understated look with tone-on-tone or low contrasting personalized finish options.

Customize your piece even further by adding an optional embellishment such as highlight striping, pattern striping, sheen level option or distressing level.

\*Optional charges may apply.



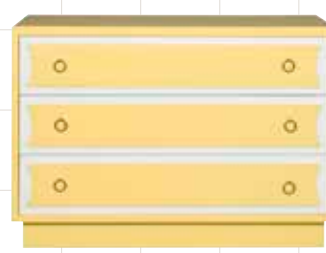
GET CREATIVE AND make it yours!



**CC03 McKinney Side Table**  
Base: Metal Tube Leg (G) in Satin Brass. Face: Greek Key (F08). Hardware: Small Wallace Pull (H05) in Satin Brass/One Column Centered (P1). Finish: Wrenn.



**CC05 Manning Side Table**  
Base: Tapered Leg (A). Face: Clip Corner (F03). Hardware: Lion's Head (H13) in Brushed Nickel/One Centered (P3). Finish: Harrison Gray with optional\* Highlight Striping in Platinum Metallic. \*Optional charges may apply.



**CC06 Prosser Drawer Chest**  
Base: Plinth Base (D). Face: Ribbon (F07). Hardware: Small Ring (H10) in Satin Brass/Two Column Offset (P2). Combination Finish\*: Pure White (outside drawer design); MIY Paint, Pristine Flat in Sherwin Williams June Day SW 6682 (remainder). \*Optional charges may apply.



**CC03 McKinney Side Table**  
Base: Saber Leg (C). Face: Mod (F11). Hardware: Round Ball Pull (H01) in Satin Brass/One Column (P1). Combination Finish\*: New Linen (case); Mink Leaf Wood (drawer faces). \*Optional charges may apply.

Explore a world of possibilities and start designing your own in our online visualizer at [vanguardfurniture.com/pages/miybedroom](http://vanguardfurniture.com/pages/miybedroom).